

The Personal Learning Device (PLD) Initiative

Briefing for Parents

A PRESENTATION BY
MINISTRY OF EDUCATION, SINGAPORE

OFFICIAL (CLOSED) / NON-SENSITIVE



The National Digital Literacy Programme and the PLD Initiative

An Overview

The National Digital Literacy Programme (NDLP)

1. The NDLP was launched in March 2020 to help students **strengthen their digital literacy and acquire digital skills** needed to navigate an increasingly digitalised world.
2. Under the NDLP, every secondary school student will **own a school-prescribed Personal Learning Device (PLD)**. Students may use funds from their Edusave Account to pay for the PLD.

Intended Outcomes of the PLD Initiative

The use of the PLD for teaching and learning aims to:



**Support the Development of
Digital Literacy**



**Support Self-Directed and
Collaborative Learning**



**Enhance Teaching and
Learning**

Learning with a PLD

Bukit Merah Secondary School

Note: The information contained in this deck of slides is customised according to our school's context and the device selected.

How will your child/ward use the PLD?

At **Bukit Merah Secondary School**, your child/ward will be using the PLDs for 1 to 1 tech-enabled learning.

To create a student-centric, engaging and stimulating teaching and learning environment which encourages Merahans to:

- taking ownership of their learning
- participating in collaborative learning
- extending their learning beyond the classroom

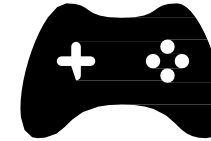


Supporting Students in the Safe and Effective Use of the Devices

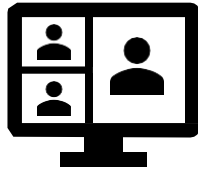
Cyber Wellness Concerns Identified by Local Studies/Surveys



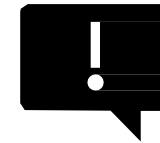
**Harmful Online
Content**



**Gaming and
associated risks**



Cyberbullying



**Excessive social
media use**

Supporting Students in the Safe and Effective Use of the Devices

The school has measures in place to enable a safer digital environment for learning with the use of PLDs, e.g.

- School rules on digital device use
- Classroom management and routines
- Cyber Wellness Education in CCE
- Partnering parents/guardians to support students in their use of technology for learning
- Device Management Application (DMA) to support a safer digital environment for learning

School Rules on Digital Device Use

1. Ensure Your PLD is Fully Charged:

- Bring a fully charged PLD to school every day to support your educational activities.

2. Educational Use as Directed:

- Use the PLD exclusively for educational purposes as directed by the teacher during class time.

3. Respectful and Responsible Use:

- Use the PLD with respect and responsibility, avoiding activities that may disrupt the learning environment.

4. Guided Internet Access:

- Access the internet on your PLD solely for educational purposes and adhere to guidance provided by the teacher.

5. Proper Storage as Instructed:

- Keep your PLD in the designated area as instructed by the teacher to maintain an organised and focused learning environment.

6. Device Security Responsibility:

- Take responsibility for the security of your PLD. Avoid leaving it unattended and promptly report any incidents of theft or damage.

7. No Overnight Stay in School:

- Remember not to leave your PLD in school overnight. Take it home with you at the end of the school day.

Classroom Management and Routines



- Use without distractions
- Safekeep your PLD
- Bring daily
- Charge beforehand



Cyber Wellness Education in CCE

Educating students on Cyber Wellness

MOE has made significant changes to the Character and Citizenship Education (CCE) curriculum. Cyber Wellness lessons will feature significantly in these lessons.

The broad topics covered in Cyber Wellness are:

- Cyber Use
- Cyber Identity
- Cyber Relationships
- Cyber Citizenship
- Cyber Ethics

Cyber Wellness Education in CCE

Throughout their Secondary School education, students will learn about:

- Balanced use and self control
- Cyber bullying and Upstanding
- How to be a positive influence online
- How to handle online falsehoods
- How to manage social media (peer influence, emotions, echo chambers)
- Online relationship and Online safety (grooming, self disclosure)
- To respect intellectual property rights

Cyber Wellness Programmes

In addition to these lessons, through various programmes in school, students will continue to learn to be **respectful, safe, and responsible users of technology**.



The school also has strategies to enable school-wide implementation of CCE. These include:

- ✓ Promoting a Peer Support Culture
- ✓ Creating CCE Whitespace
- ✓ Trained Specialised CCE Teachers

Parents'/Guardians' Role

- We would like to partner parents/guardians so that that students are well supported in their use of technology for learning.
- As parents/guardians, you can help in the following ways:
 - Model good digital habits for your child/ward e.g. parents/guardians not using devices during family meals.
 - Know your child/ward well, and have conversations with your child/ward about safe and responsible use of technology.
 - Discuss and come up with ground rules for internet/device usage that both your child/ward and you can agree with.
 - Encourage your child/ward to use productivity tools using his/her PLD, to organise information and simplify tasks for efficiency.

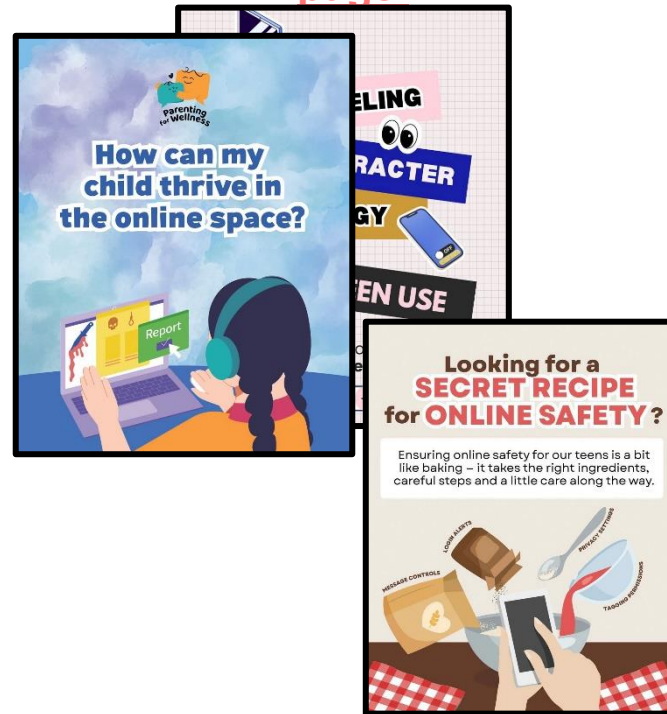
Supporting Resources

Here are some resources that you can refer to:

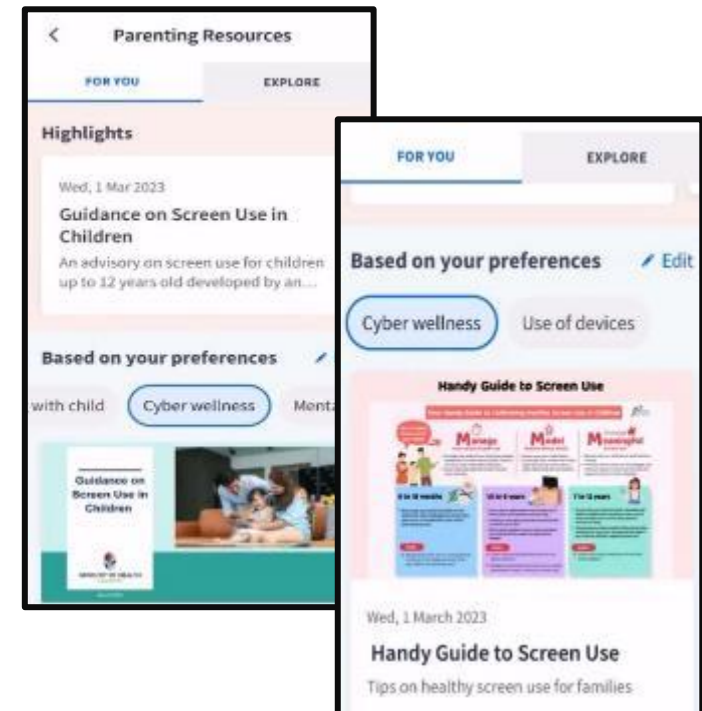
A. Parent Kit



B. Bite-sized tips and advice via Parentingwith.MOESg Instagram page



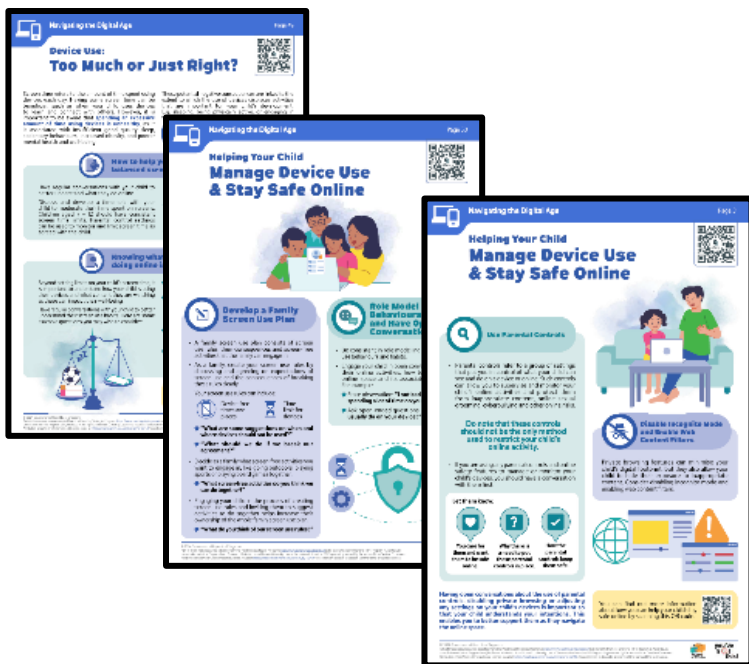
C. Resources from MOE and other agencies (available on resources repository in Parents Gateway)



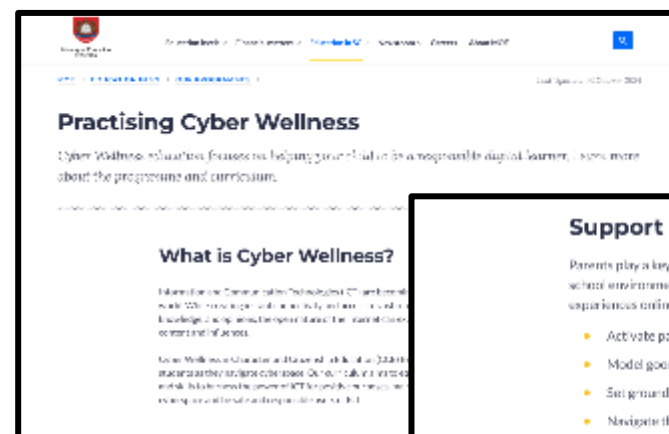
Supporting Resources

D. Parenting for Wellness Toolbox for Parents and Parenting for Wellness Website on Parent Hub

The Parenting for Wellness initiative provides bite-sized resources (practical tips and strategies) on building strong parent-child relationships, supporting your child's mental well-being and parenting in the digital age.



E. More resources are available via the MOE Cyber Wellness Webpage



Support at home

Parents play a key role in their children's growth. Students benefit the most when the home and school environments are aligned to each other. To help your child stay safe and have positive experiences online, you can:

- Activate parental controls on your home devices.
- Model good digital habits for your child.
- Set ground rules for internet use.
- Navigate the internet together to understand their usage.

Resources

Learn more about how to keep your child safe online through these resources:

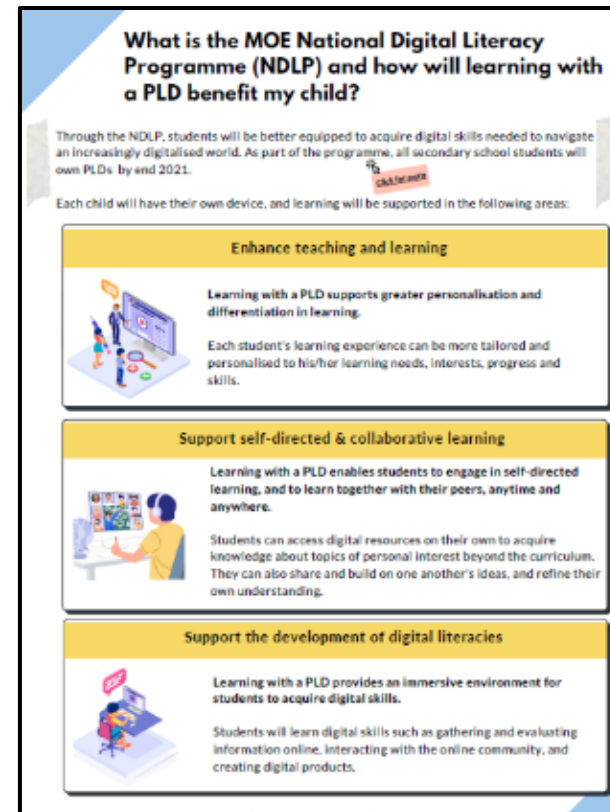
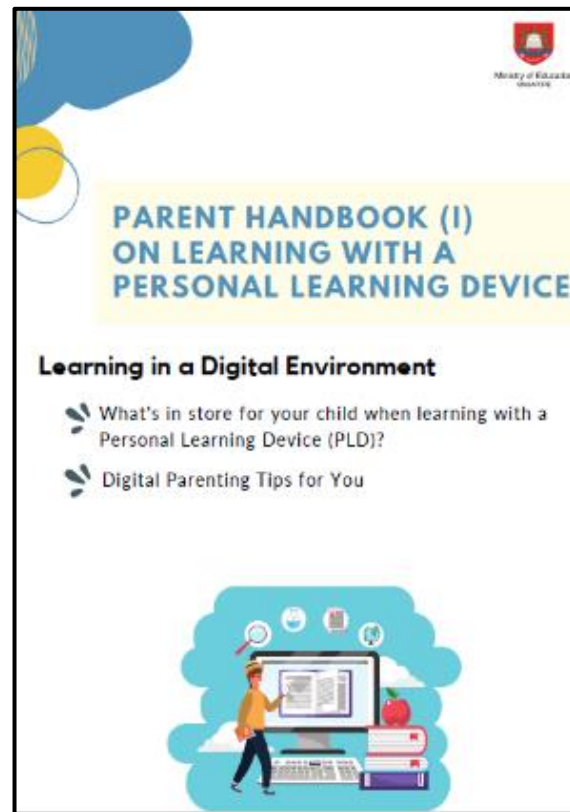
From MOE

- [Children and their devices: How to strike the right balance](#)
- [Future tense: Keeping kids grounded while tech turns the world upside down](#)
- [What does a student's AI-enhanced day look like? Here's a peek](#)
- [Are you struggling with your child's excessive device use?](#)
- [7 things every parent can do to keep kids cyber safe: A tech dad's special](#)
- [The future looks real? why this dad isn't afraid of the rise of AI](#)
- [Keeping kids safe online – A community effort](#)
- [Parent Kit – Raising A Digitally Smart Child](#)
- [Parent Kit – Experiencing Blended Learning with Our Children](#)
- [Recording of Instagram Live – Raising Digitally Smart Kids](#)

Supporting Resources

F. Parent Handbooks (I) and (II) on Learning with a Personal Learning Device

These Handbooks provide tips on supporting your child in the use of PLDs for learning and are shared via the PG notification together with the letter to purchase PLDs.



Role of the MOE Device Management Application (DMA) in Providing a Safer Digital Environment for Learning

MOE DMA Installation

- The MOE DMA solution for Windows, Blocks, is an app that will be installed on all students' PLDs to support their safe and responsible use of devices.
- The DMA will be funded by MOE.
- The installation of the MOE DMA applies to both devices purchased through the school and any student-owned devices that parents/guardians opt for the student to use instead of the school-prescribed PLD.
- The MOE DMA will be installed after the collection of the device. Students will be guided on the installation.
- The MOE DMA will be uninstalled from the device when students graduate or leave the school.

In-School DMA Settings (Default)

Schools will determine DMA settings for **in-school use**. As a default, these settings will continue to be in place after school as well:

- MOE and the school will set the level of web content filtering, including filtering out objectionable content or content that may not be conducive to teaching and learning (e.g. online messaging, social media, pornography, gambling, or websites containing extremist content).¹
- Students will be able to use the device from **6.30 a.m. to 10.30 p.m** daily. The device will shut down at **10:30 pm** by default.
- The school will determine the apps and programs to be installed to support teaching and learning.

¹ YouTube is not blocked by default as teachers use YouTube for teaching and learning. However, YouTube videos that are categorised as harmful by YouTube Restricted and Lightspeed Smart Play are blocked

After-School DMA Parent Options

- 1. After-School DMA Parent Options provide parents with the flexibility in managing their child’s/ward’s use of PLD after school hours.
- 2. The following tables outline the different levels of restrictions, controls, and monitoring for each DMA option after school hours.

Default	Option A	Option B
Default Setting (Note: This will apply if no alternative options are chosen)	DMA settings can be modified by Parents/Guardians after school hours	DMA will be inactive after school hours¹
For parents/guardians who want their child’s/ward’s use of the PLD to be restricted only to teaching and learning and prefer to leave it to the school to decide on DMA settings after school hours.	For parents/guardians who prefer to take charge of the level of restrictions for their child’s/ward’s use of the PLD after school hours regulated by the DMA.	For parents/guardians who do not want their child’s/ward’s use of the PLD after school hours to be regulated by the DMA at all.

¹ No data will be collected after school hours when the DMA is inactive.

- Having default school settings continue after school hours is the best option for parents/guardians who prefer not to, or do not feel ready to manage their child’s/ward’s device use on their own.
- Parents/guardians can request to change their choice of DMA settings, which is the existing practice.

After-School DMA Parent Options

	Default Setting (This will apply if no Alternative Options are chosen)	Alternative Setting: Option A (DMA settings can be modified)	Alternative Setting: Option B (DMA will be inactive only after school hours)
Protecting students from objectionable content	<p>Web content filtering will include, and not limited to, the following categories:</p> <ul style="list-style-type: none"> • Violent/extremist content • Sexual/pornographic content • Gambling-related content • Suicide/self-harm content • Cyberbullying content • Content endangering public health 	<p>Parents/Guardians can apply additional content filtering via the Blocksie parents' portal.</p> <p>However, they cannot allow access to web content that is filtered out under the Default Setting.</p>	<p>No content filtering after school hours if student uses a non-Google Chrome browser.</p>

After-School DMA Parent Options

Functions	Default Setting (This will apply if no Alternative Options are chosen)	Alternative Setting: Option A (DMA settings can be modified)	Alternative Setting: Option B (DMA will be inactive only after school hours)
Reduce distractions from learning through control of applications	Parents/Guardians and students will be unable to install additional applications.	Parents/Guardians and/or students will be able to install additional applications after school hours using specialised accounts. Applications installed by parents/guardians and/or students after school hours will be disabled during school hours.	
Limit screen time	The school will set the hours during which the child/ward will be able to use the PLD.	Parents/Guardians can modify the amount of screen time for their child/ward by requesting the school set sleep hours (by selecting 1 prescribed option) on their child's/ward's PLD. ²	No limitation on duration of screen time after school hours. Sleep hours are not enforced. ³

² During school hours, the screen time limits set by the school will override parents/guardians' settings.

³ It is not recommended to install other parental controls (e.g., Windows's Family Safety) as this could result in conflicting settings between school and parent controls. It may result in unexpected issues where some controls such as screen time restrictions may not work as intended.

After-School DMA Parent Options

Functions	Default Setting (This will apply if no Alternative Options are chosen)	Alternative Setting: Option A (DMA settings can be modified)	Alternative Setting: Option B (DMA will be inactive only after school hours)
Monitor students' cyber activities	Parents/Guardians will not be able to track their child's/ward's web browser.	A parent/guardian account will be provided to allow them to monitor their child's/ward's PLD activities after school hours via the Blocks i parents' portal.	Parents/Guardians will not be able to track their child's/ward's web browser*.
Provision of Parent account	X	✓	X

*Parents/Guardians and students on Option B will need to use non-Chrome browsers to avoid web browsing history tracking and web content filtering.

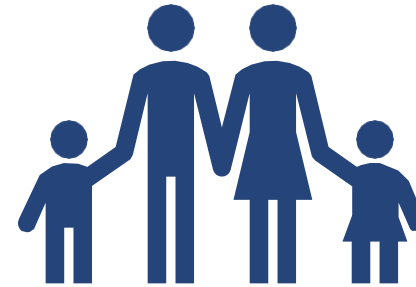
Support for Parents/Guardians

Parents/guardians may wish to consider the following questions to decide the After-School DMA Parent Option that best suits your child/ward.



A. Child's/ward's current device usage habits

- How much time does my child/ward spend on their device?
- How well is my child/ward able to regulate their device usage on their own?
- Does my child/ward get easily distracted while doing online learning?



B. Parents'/Guardians' involvement

- How confident and familiar am I with managing my child's/ward's cyber wellness?
- Are there existing routines and open conversations on the use of the Internet at home?
- Am I aware of how to prevent different types of cyber threats that my child/ward might face?

Data Collected by the MOE DMA

1. The MOE DMA does **NOT** collect any of the following data:
 - Login IDs and passwords entered into websites or into any applications
 - Actions performed (e.g. posts, online comments, items added to a shopping cart, etc.) when visiting websites and using apps
 - Documents and photos stored in the PLDs
 - PLD location
 - Webcam videos and microphone recordings
2. Parents may update their personal data (e.g. email addresses, names) by contacting the school, in accordance with the Personal Data and Protection Act (PDPA).

Data Security

- All user data collected through the MOE DMA will be stored in secure servers managed by appointed DMA Vendors with stringent access controls and audit trails implemented.
- Data such as device information, email address of students and parents, device information will be deleted when the student graduates or leaves school. Website URLs accessed by students will be deleted at the end of each term.
- The MOE DMA solutions used are cloud-based Software-as-a-Service (SaaS) solutions and are trusted solutions that have been operating for many years. They have also been subject to regular security reviews and assessments by independent reviewers.

Data Security

- The MOE DMA solutions have sufficient security robustness to ensure data collected are properly stored and protected. MOE will also subject the DMA Vendors to regular security system audits based on tender requirements.
- To prevent unauthorised access, DMA Administrators and DMA Vendors will be required to access their accounts using 2-factor authentication or the equivalent to ensure proper accountability for information access and other activities performed. There will be regular account reviews and audits for DMA Administrators' and DMA Vendors' accounts.

Device and Funding Information

Bukit Merah Secondary School's PLD



Intel Processor N250,
8GB RAM,
256GB SSD Storage,
Dual Cameras,
Active Stylus Pen
12.2" Screen Size

The school will be using the **Acer TravelMate Spin B3** for teaching and learning.

Total cost of the bundle includes 4-year warranty and 4-year insurance with 9% GST: **\$692.10**

Bukit Merah Secondary School's PLD



Acer TravelMate Spin B3

The school chose the device because of:

- Portability
- Durability
- T&L Affordances
 1. Touch Screen
 2. Use of Stylus/Pen to write (Inking function)
 3. Typing using keyboard
 4. Video recording
 5. Multimedia editing

PLD Bundle

Device Bundle includes
<ul style="list-style-type: none">• Acer TravelMate Spin B3• Power Adaptor, Mouse, Carrier Bag, Docked-in Active Stylus Pen with built-in rechargeable battery within stylus (charge while docked)• Insurance and Warranty

Your child’s/ward’s PLD will come with the **Enhanced Device Bundle** which includes:

- 4-year warranty and
- 4-year insurance (which includes 2 repairs or 1 replacement claim)

*The price of the PLD Bundle may appear to be higher than similar models on the retail market as the price of those devices usually does not include extended warranty and insurance coverage.

Insurance Coverage



The package includes a 4-year warranty, and 4-year insurance* which includes:

Insurance Coverage	Claimable
<ul style="list-style-type: none">• Fire• Lightning• Power Surges• Accidental e.g water spillage, drop etc• Theft due to forcible entry• Robbery <p>* Accidental loss will not be covered by insurance.</p>	<p>*2 repairs or 1 replacement (4-year insurance)</p>

Technical Support for Students' Devices

Technical support will be provided to students through:

- Service Desk set up in school during breaks and after school
 - Troubleshooting of device issues
 - Solve connectivity issues
 - Collection of devices to be sent for repairs

	School ICT support staff Mr Muhamad Haikal Bin Razali
	School-Based Service Desk Operating Day(s): Monday to Friday Operating Hours: 1 pm – 4 pm Venue: Outside Staffroom

Technical Support for Students' Devices

Acer Service Centre



Help Desk Number:
6895 6278



Help Desk Operating Hours:
Mon, Tue, Thu, Fri: 0845 – 1715
Wed: 0845 – 1945
Sat: 0900 – 1200
Sun and Public Holiday: Closed



Help Desk Email:
acercare.sg@acer.com



Website:
<https://secured.acer.com.sg/pld>
(For buying of accessories)

Technical Support for Students' Devices

Acer Service Centre



Location:

29 International Business Park

Singapore 609923

(1.1km from Jurong East MRT)

Service Centre Number: 6895 6278

Service Centre Email: acercare.sg@acer.com

For any service case, please **first** write to the email above with:

Subject header: MOE PLD <Student Name> <School> <Serial Number>

Content: School, Device model, Serial number, Brief description of problem, Person to contact and Contact number

Opening hours:

Mon, Tue, Thu, Fri: 0845 – 1715

Wed: 0845 – 1945

Sat: 0900 – 1200

Sun and Public Holiday: Closed

Funding Support for Singapore Citizen (SC) Students

- **The cost of the device bundle can be paid using your child's/charge's Edusave account**, after setting aside provision for payment of miscellaneous fees.
- To ensure the affordability of devices, MOE has provided Edusave top-ups from 2020 to 2023 to all eligible Singaporean students in primary and secondary schools. In 2025, MOE provided a \$500 Edusave top-up for students aged 13-16 years old.
- These top-ups are on top of the annual \$290 credited into the Edusave account for Secondary School students and \$230 for Primary School students.

Funding Support for Singapore Citizen (SC) Students

- For SC students who are on MOE Financial Assistance Scheme or whose family's monthly income meets the following criteria:

Gross Household Income (GHI) \leq \$4,000, or

Per Capita Income (PCI) \leq \$1,000

MOE will subsidise 50% of device bundle cost or \$350, whichever is lower.

- The remaining amount will be payable from the students' Edusave account. **If there is insufficient balance** in the students' Edusave account for the remaining amount, MOE will **provide additional subsidy** so that the **cash out-of-pocket (OOP) is \$0**.

Funding Scenario: Student A (SC)



**Acer TravelMate
Spin B3**

\$692.10

Student A (SC on MOE FAS) GHI ≤ \$4,000 or PCI ≤ \$1000	
Device Bundle Cost	\$692.10
Student Subsidy	\$346.10
Available Edusave Balance <i>(After setting aside for misc fees)</i>	\$200.00 before deduction \$200.00 will be deducted <i>insufficient funds in the Edusave account</i> <i>Balance payment after Edusave deduction: \$146.10</i>
Additional Subsidy	\$146.10
Cash Out-of-pocket	\$0.00

For more details on financial assistance, please approach the school.
Each student would receive a personalised bill subsequently.

Funding Support for Singapore Citizen (SC) Students

- For SC students whose family's monthly income is:

$\$4,000 < \text{Gross Household Income (GHI)} \leq \$5,500$, or

$\$1,000 < \text{Per Capita Income (PCI)} \leq \$1,375$

MOE will subsidise 30% of device bundle cost or \$200, whichever is lower.

- The remaining amount will be payable from the students' Edusave account. If there is insufficient balance in the students' Edusave account for the remaining amount, MOE will provide additional subsidy so that the cash out-of-pocket (OOP) is not more than \$50.

Funding Scenario: Student B (SC)



**Acer TravelMate
Spin B3**

\$692.10

Student B (Non MOE-FAS SC from lower income family) \$4,000 < GHI ≤ \$5,500 or \$1000 < PCI ≤ \$1,375	
Device Bundle Cost	\$692.10
Student Subsidy	\$200
Available Edusave Balance <i>(After setting aside for misc fees)</i>	\$200.00 before deduction \$200.00 will be deducted <i>insufficient funds in the Edusave account</i> <i>Balance payment after Edusave deduction: \$292.10</i>
Additional Subsidy	\$242.10
Cash Out-of-pocket	\$50.00

For more details on financial assistance, please approach the school.
Each student would receive a personalised bill subsequently.

Funding Support for Singapore Citizen (SC) Students

Subsidies will not be provided for SC students whose family's monthly:


Gross Household Income (GHI) is above \$5,500 or

Per Capita Income (PCI)[#] is above \$1,375.

Parents/Guardians can use their child's/ward's Edusave or cash to defray the device bundle cost.

[#]PCI is Gross Household Income divided by the number of household members.

Funding Scenario: Student C (SC)

An Acer TravelMate Spin B3 tablet is shown in its open, tablet mode. The screen displays a vibrant, abstract painting with red, yellow, and blue colors. A stylus is resting on the screen. The device is black with a silver hinge.

**Acer TravelMate
Spin B3**

\$692.10

Student C (Not Eligible for Subsidy) GHI > \$5,500 or PCI > \$1,375	
Device Bundle Cost	\$692.10
Available Edusave Balance <i>(After setting aside for misc fees)</i>	<div>\$200.00 before deduction \$200.00 will be deducted <i>insufficient funds in the Edusave account</i> <i>Balance payment after Edusave deduction: \$492.10</i></div>
Cash Out-of-pocket	\$492.10

For more details on financial assistance, please approach the school.
Each student would receive a personalised bill subsequently.

Funding Support for Non-Singapore Citizen Students

- Permanent residents (PR) and international students (IS) who need support could apply for subsidies.
- For more details, please approach the school.

What's Next?

Parental Consent for Procurement

1. Parents can access the **Parental Consent for the Purchase of Personal Learning Device (PLD)** via a Parents Gateway (PG) notification* that was sent to you on **15 January 2026**.
2. Parents who want to use Edusave funds for the PLD (for Singapore Citizens students only), please submit the online Standing Order Form via this link: <https://go.gov.sg/edusaveformsgso> by **23 January 2026** to set up a **PDLP Standing Order** as this was not applicable during primary school.

* Parents/Guardians without access to PG can request for the hardcopy letter via your child's/ward's form teacher.

For Singapore Citizens (SC) Students

Time Frame	Activity
15 - 23 Jan	<ol style="list-style-type: none"> 1. Submit: <ol style="list-style-type: none"> a. consent to PLD purchase via in the PG notification which includes the following: <ul style="list-style-type: none"> • Intent to Purchase Personal Learning Device (PLD); • Authorisation Form for the Collection of PLD b. the Standing Order (SO) for the use of Edusave Account via https://go.gov.sg/edusaveformsgso (for Singapore Citizen students only) to set up a PDLP SO. <p>Parents without access to PG can submit their consent via hardcopy.</p>
early Feb	Parent/Guardian to receive personalised school bill for PLD and to make payment via Giro/PayNow if required
end Feb / Mar	Collection of devices by students

For Permanent Residents / International Students

Time Frame	Activity
15 - 23 Jan	<ol style="list-style-type: none"> Submit consent to PLD purchase which includes the following: <ul style="list-style-type: none"> Intent to Purchase Personal Learning Device (PLD); Authorisation Form for the Collection of PLD <p>Submission will be done online using the link provided in PG.</p>
early Feb	Parent/Guardian to receive personalised school bill for PLD and to make payment via Giro/PayNow
end Feb / Mar	Collection of devices by students

Collection of Devices

Your child/ward will be collecting his/her device in school **from Term 2.**

If you would like to personally/have another adult to verify the condition of the device during collection with your child/ward:

- You may collect the device personally or appoint an adult proxy to do so **at the vendor's service/collection centre***
- Your child/ward would need to bring the device to school and arrange for the school's IT department to install the DMA.

Please approach the school for further advice or clarification if you would like to make this arrangement.

* Parents/Guardians (or adult proxy) will not be able to collect the PLD from the school.

Important Contacts / Helplines

To access / find out more about...	Contact / Helpline
This deck of slides	https://bukitmerahsec.moe.edu.sg
Edusave balance	6260 0777
Financial assistance	6474 8934
NDLP / PDLP in BMSS	<p>Mr Jereme Chee, HOD ICT (Covering) chew_kwok_seng@schools.gov.sg</p> <p>Mr Muhammad Haikal Razali, ICT Manager muhammad_haikal_razali@schools.gov.sg</p>

Thank you



OFFICIAL(CLOSED)\NON-SENSITIVE



Ministry of Education

SINGAPORE