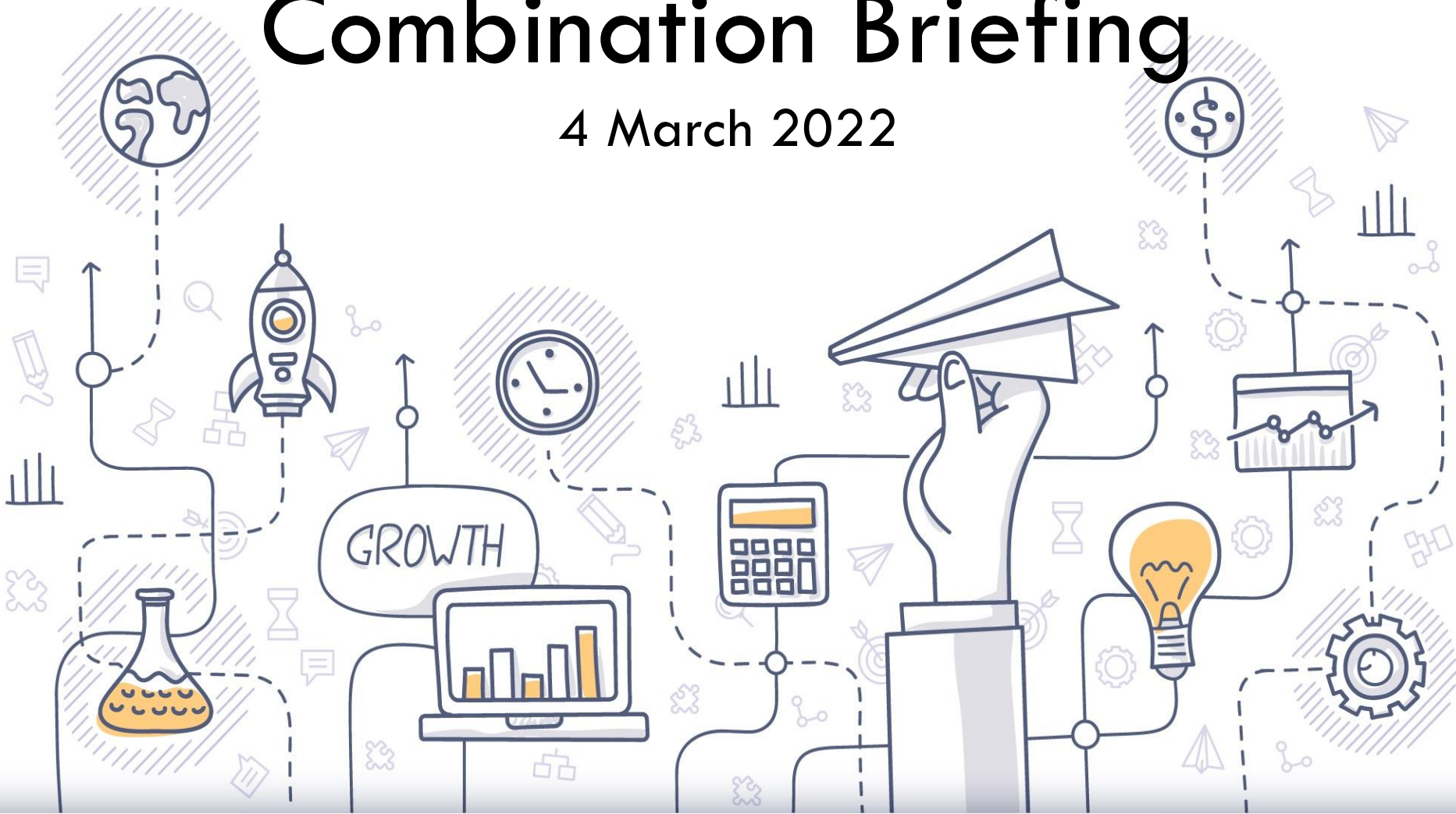


# Sec 2 N(A) Subject Combination Briefing

# 4 March 2022



# Some important questions...

- **Why is it important** to choose the right subjects?
- **What should you consider** when exercising your choice?
- **What choices** does the school offer?
- **How can you get** the subjects of your choice?
- **What can you do** to be better prepared?



# Why is it important to choose the right subjects?

End of Sec 4

Pursuing your desired  
tertiary education and  
course of study

End of tertiary education  
Pursuing your interest/  
passion/ aspiration / career

End of Sec 2

The subjects you can select

Middle of Sec 2

Your academic  
performance now!



# What should you consider when exercising your choice?

## **Pursuing your interest/passion/aspiration**

I am interested in  
our history

I aspire to be an artist

I can make a  
difference to  
climate change

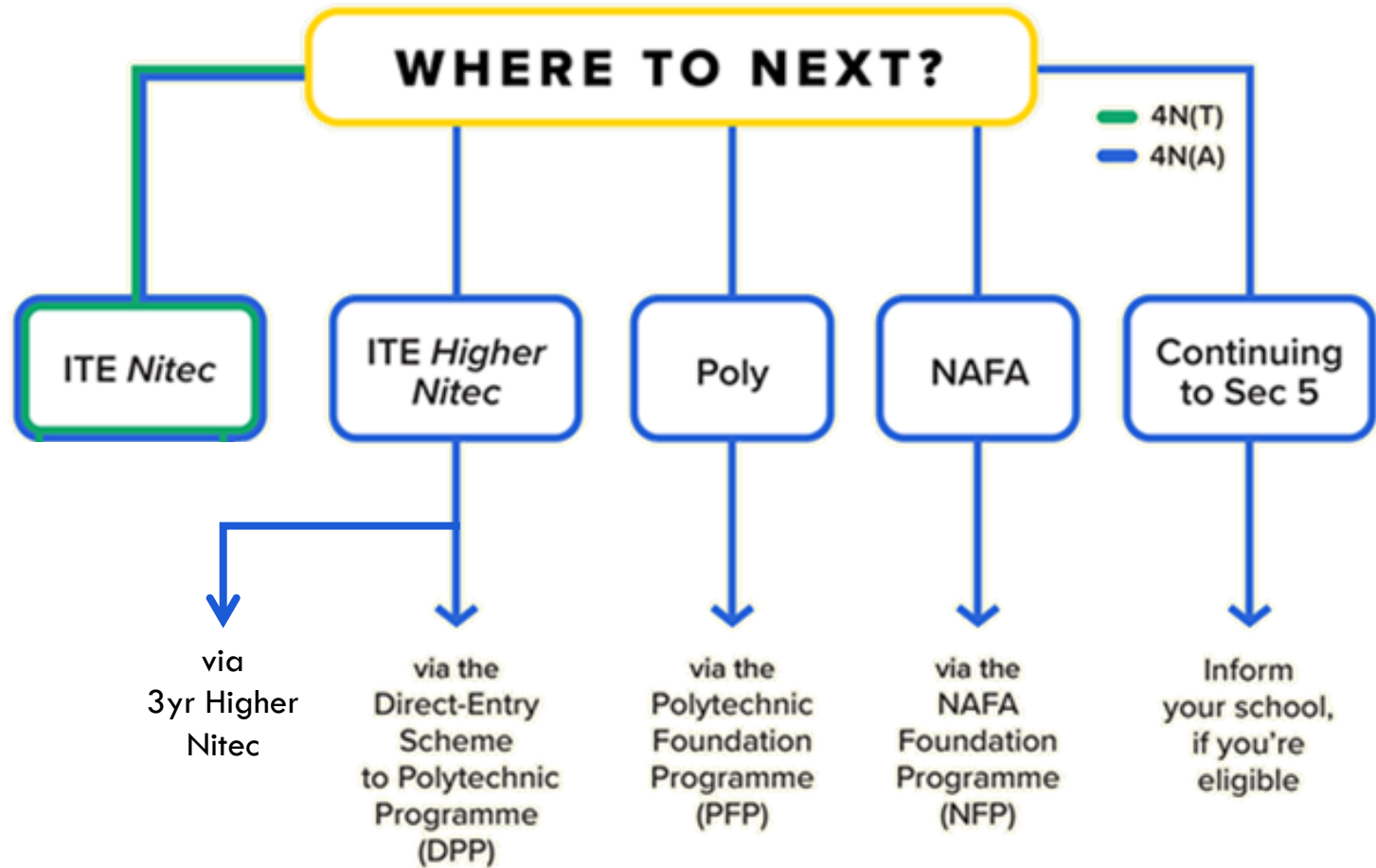
I dreamt I invented  
the fastest car

**Where do you want to be?**

**Consider your interest/passion/aspiration/career**

# What should you consider when exercising your choice?

## Pursuing your desired tertiary education



# What should you consider when exercising your choice?

## Pursuing your desired tertiary education

### PFP (Poly Foundation Program)

- $\text{ELMAB3} \leq 12 \text{ points}$  (excl. CCA)
- Meet course specific requirements
  - ✓ Group 1:  $\text{EL} \leq 3, \text{MA} \leq 3, \text{R1} \leq 3$
  - ✓ Group 2:  $\text{EL} \leq 2, \text{MA} \leq 3, \text{R1} \leq 3$
- 1-year foundation programme in poly

### Sec 5

- $\text{ELMAB3} \leq 19 \text{ points}$  (excl. CCA)
- 1-year to prepare for O'level course

### DPP (Direct Poly Program)

- $\text{ELMAB3} \leq 19 \text{ points}$  (excl. CCA)
- Meet course specific requirements
  - ✓ Applied Sciences, Engineering InfoComm:  $\text{EL} \leq 4, \text{MA} \leq 4, \text{any } 3 \leq 5$
  - ✓ Business & Services:  $\text{EL} \leq 3, \text{MA} \leq 4, \text{any } 3 \leq 5$
- $2\frac{1}{4}$  year in ITE, including 10-week preparatory course
- Guaranteed a place in the 1st Year relevant polytechnic diploma course and may progress to second year in relevant polytechnic diploma course\* (if you meet the qualifying GPA for Higher Nitec)

**Where are you right now?**

**Consider your ability, strengths and weaknesses**

# What should you consider when exercising your choice?

## Pursuing your desired tertiary education

### *Polytechnic Route (PFP)*

Many courses require relevant subjects

Some examples of PFP Group 1 courses:

↕ Poly	↕ Course Code	↕ Course Name	↕ Course Group	For Courses featured in Group 1	Minimum Required Grades
SP	S64	Applied Chemistry	GROUP 1	English Language Syllabus A	3
NYP	C62	Advanced and Digital Manufacturing	GROUP 1	Mathematics Syllabus A / Additional Mathematics	3
NYP	C51	Aeronautical & Aerospace Technology	GROUP 1	One of the following relevant subjects: <ul style="list-style-type: none"><li>- Design and Technology</li><li>- Food and Nutrition</li><li>- Science (Chemistry, Biology)</li><li>- Science (Physics, Biology)</li><li>- Science (Physics, Chemistry)</li></ul>	3
SP	S88	Aeronautical Engineering	GROUP 1		
SP	S90	Aerospace Electronics	GROUP 1		
				Any two other subjects excluding CCA	3

## How can you get there?

## Consider your future course requirements

# What should you consider when exercising your choice?

## Pursuing your desired tertiary education

### *Higher Nitec route (DPP)*

Courses	College	COP (EMB3)		
		2021	2020	2019
<b>APPLIED SCIENCES</b>				
Chemical Technology	CE-SM	8	8	8
<b>ENGINEERING</b>				
Civil & Structural Engineering Design	CE-SM	10	9	10
Electrical Engineering	CE-SM	14	14	14
	CW-CK	14	14	14
Electronics Engineering	CC-AM	13	13	13
	CE-SM	15	15	15
	CW-CK	15	15	15
Mechanical Engineering	CC-AM	11	12	12
	CE-SM	14	14	15
	CW-CK	14	14	15
Mechatronics Engineering	CC-AM	12	12	12
	CW-CK	14	14	14

Popular courses  
are competitive

**Where are you right now?**

**Consider your ability, strengths and weaknesses**



# What should you consider when exercising your choice?

## Pursuing your desired tertiary education

### *Nitec route*

2-Year <i>Nitec</i> Courses by School	Course Code	College Code	2021 JIE 'N' ITE Aggregate Point (based on <u>4 subjects</u> )	Minimum Entry Requirements
<b>APPLIED &amp; HEALTH SCIENCES</b>				
Applied Food Science ②⑤	NFAFZ	CE-SM	8	8 GCE 'N' Passes (Grade A-D or Grade 1-5) in Mathematics or Science* and two other subjects <b>Or</b> 2 GCE 'O' Grades (Grade 1-8) in any two subjects
Chemical Process Technology ②⑤	NFCPZ	CE-SM	9	
Community Care & Social Services ①③⑤ <i>In view of the nature of work in the community care and social services sectors, applicants should possess a caring attitude and a service-oriented mindset. Shortlisted applicants have to attend an <u>online</u> interview scheduled on <b>Thu 23 Dec 2021, Mon 27 Dec 2021 or Tue 28 Dec 2021</b> and pass a prescribed medical examination.</i>	NFCSZ	CE-SM	14	

Nitec courses are competitive

(8 aggregate points means a grade 3 for each NA subject)

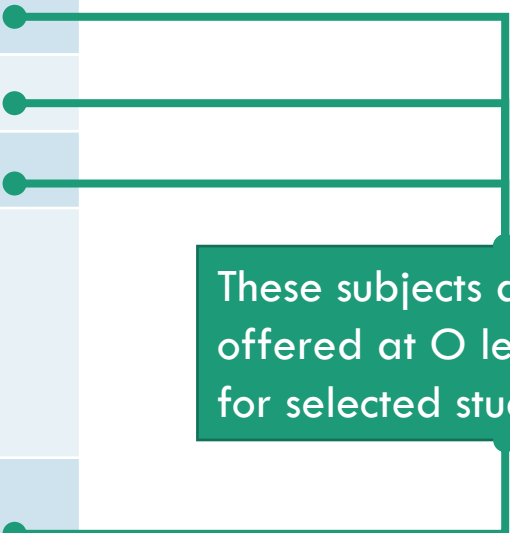
**Where are you right now?**

**Consider your ability, strengths and weaknesses**

# What choices does the school offer?

NA students generally take 6 subjects.

No	Subjects
1	English Language
2	Mother Tongue
3	Mathematics
4	<b>Choice of combined humanities (choose 1)</b> <ul style="list-style-type: none"><li>• Social Studies &amp; History</li><li>• Social Studies &amp; Geography</li></ul>
5	<b>Choice of science (choose 1)</b> <ul style="list-style-type: none"><li>• Science(Physics/Chemistry)</li><li>• Science(Chemistry/Biology)</li></ul>
6	<b>Choice of electives (choose 1)</b> <ul style="list-style-type: none"><li>• Art</li><li>• Design &amp; Technology</li><li>• Nutrition &amp; Food Science</li><li>• Principles of Accounts</li><li>• <b>Additional Mathematics*</b></li></ul>



These subjects are also offered at O level standards for selected students.

\* Subject with criteria

# What choices does the school offer?



Some of these subjects/combinations are more demanding. Hence, criteria are set to ensure students are able to manage in Sec 3 & 4.

Subject	Criteria (based on Sec 2 overall results)
Additional Mathematics	Maths $\geq 75\%$ AND $\geq 75\%$ in Algebra component

# What choices does the school offer?

## Subject comparison (Humanities)



### History

- Impact of World War I
- Rise of authoritarian regimes and its impact in the interwar years
- World War II in Europe and the Asia–Pacific
- Cold War and the bi-polar world order
- Manifestation of the Cold War outside Europe
- Reasons for the end of the Cold War

### Geography

- Geography in Everyday life
- Climate or Tectonics
- Topographical Map Reading Skills
- Geographical Data and Techniques

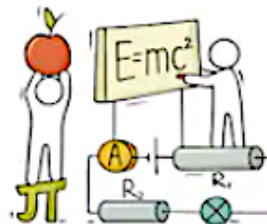
# What choices does the school offer?

## Subject comparison (Humanities)

	History	Geography
<b>Exam Format</b>	<b>Paper 1 (50%, 1 h 45min) - Social Studies</b> Section A (35m): Source-based case study Section B (15m): 1 structured-response question	
	<b>Paper 2 (50%, 1 h 40min)</b> <ul style="list-style-type: none"> <li>• <b>Section A (30%)</b> <b>Source-based</b></li> <li>• <b>Section B (20%)</b> <b>Structured Essay</b> Answer 1 out of 2 questions.</li> </ul>	<b>Paper 2 (50%, 1 h 40min)</b> <ul style="list-style-type: none"> <li>• <b>Section A (13%)</b></li> <li>• <b>Section B (12%)</b></li> <li>• <b>Section C (25%)</b></li> </ul> For each section, answer 1 out of 2 structured questions.
<b>JC</b>	<ul style="list-style-type: none"> <li>• Not a pre-requisite for JC subjects</li> </ul>	<ul style="list-style-type: none"> <li>• Not a pre-requisite for JC subjects</li> </ul>
<b>Poly (R1/R2)</b>	<ul style="list-style-type: none"> <li>• Humanities or Media</li> <li>• Business</li> </ul>	

# What choices does the school offer?

## Subject comparison (Sciences)



### Chemistry

- Experimental chemistry
- Atomic structure & stoichiometry
- Chemistry of reactions
- Periodicity
- Atmosphere
- Organic chemistry

### Physics

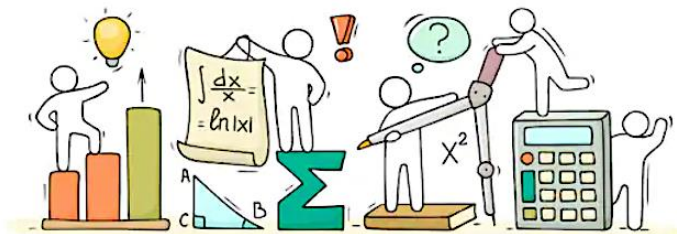
- Measurement
- Newtonian mechanics
- Thermal physics
- Waves
- Electricity & magnetism

### Biology

- Principles of biology
- Maintenance & regulation of life processes
- Continuity of life
- Man and his environment

# What choices does the school offer?

## Subject comparison (Amath vs POA)



### Additional Mathematics

- Three strands:
  - Algebra
  - Geometry and Trigonometry
  - Calculus
- Requires: Conceptual understanding, skill proficiency, reasoning, communication and connections, thinking skills and heuristics, and applications and modelling

### Principles of Account

- Introduction to financial accounting
- Prepare, communicate and use financial information
- Appreciate the need for ethical conduct.
- Develop lifelong skills and values useful in the increasingly complex world of business.
- Develop decision-making skill in evaluating choices using both accounting and non-accounting information

# What choices does the school offer?

## Subject comparison (Amath vs POA)

	Additional Mathematics	Principles of Account
<b>Exam Format</b>	<p><b>Paper 1 (50%, 70m, 1h 45min)</b></p> <ul style="list-style-type: none"> <li>13 – 15 Qn</li> </ul> <p><b>Paper 2 (50%, 70m, 1h 45min)</b></p> <ul style="list-style-type: none"> <li>8 – 10 Qn</li> </ul>	<p><b>Paper 1 (40%, 40m, 1h):</b></p> <p><b>Structured (3 – 4 Qn)</b></p> <p><b>Paper 2 (60%, 60m, 2h):</b></p> <ul style="list-style-type: none"> <li>Answer 4 compulsory structured questions. (60 marks)</li> <li>One question requires the preparation of financial statements for a business for one financial year. (20 marks)</li> <li>A scenario-based question (5 marks) will be part of one of the 3 remaining questions.</li> </ul>
<b>JC</b>	<ul style="list-style-type: none"> <li>Requirement for H2 Math</li> </ul>	<ul style="list-style-type: none"> <li>Not a pre-requisite for JC subjects</li> </ul>
<b>Poly</b>	<ul style="list-style-type: none"> <li>Humanities or Media</li> <li>Business</li> <li>Engineering, Science, Facility Management or IT</li> <li>Architecture or design</li> </ul>	<ul style="list-style-type: none"> <li>Humanities or Media</li> <li>Business</li> </ul>



# What choices does the school offer?

## Subject comparison (Coursework)

Design & Technology	Nutrition & Food Science	Art
<ul style="list-style-type: none"><li>• Design and prototype ideas</li><li>• Understand everyday activities and create possibilities to make life better.</li><li>• Cultivate creative, critical and reflective thinking</li><li>• Develop related dispositions and skills using graphical means and technology</li></ul>	<ul style="list-style-type: none"><li>• Lead a healthier lifestyle proactively through proper diet and nutrition.</li><li>• Advocate sustainable food consumption by planning and making appropriate food choices.</li><li>• Apply principles of culinary science creatively in food preparation and cooking.</li></ul>	<ul style="list-style-type: none"><li>• Awareness and appreciation of the visual arts</li><li>• Identify and solve problems creatively in visual and tactile forms</li><li>• Use of art elements and design principles, materials and processes</li><li>• Cultivate an inquiring mind, a spirit of experimentation and a passion for the visual art</li></ul>

# What choices does the school offer?

## Subject comparison (Coursework)

	Design & Technology	Nutrition & Food Science	Art
Exam Format	<p><b>Paper 1 (40%, 60m, 1h30m)</b> Written Paper</p> <p><b>Paper 2 (60%, 20 weeks)</b> Coursework</p> <ul style="list-style-type: none"> <li>Involves <b>design journal</b>, <b>mock-up(s)</b>, <b>presentation boards</b> and <b>prototype</b></li> </ul>	<p><b>Paper 1 (40%, 80m, 1h30m)</b> Written Paper</p> <p><b>Paper 2 (60%, max. 25hrs)</b> Coursework</p> <ul style="list-style-type: none"> <li>Involves task analysis, research &amp; development, decision making, planning, execution and evaluation</li> <li>To present in <b>coursework folio</b>, max. 20 pages</li> </ul>	<p><b>Paper 1 (60%)</b> Coursework</p> <ul style="list-style-type: none"> <li>Comprise finished <b>artwork</b> and not more than five A2 sheets of <b>preparatory studies</b></li> </ul> <p><b>Paper 2 (40%, 3h)</b> Drawing and Painting</p> <ul style="list-style-type: none"> <li>Paper to be given three weeks before N Level</li> </ul>
JC	<ul style="list-style-type: none"> <li>Not a pre-requisite for JC subjects</li> </ul>	<ul style="list-style-type: none"> <li>Not a pre-requisite for JC subjects</li> </ul>	<ul style="list-style-type: none"> <li>Requirement for H2 Art in some JCs</li> </ul>
Poly	<ul style="list-style-type: none"> <li>Humanities or Media</li> <li>Engineering, Science, Facility Management or IT</li> <li>Architecture or design</li> </ul>	<ul style="list-style-type: none"> <li>Humanities or Media</li> <li>Engineering, Science, Facility Management or IT</li> <li>Architecture or design</li> </ul>	<ul style="list-style-type: none"> <li>Humanities or Media</li> <li>Business</li> <li>Architecture or design</li> </ul>

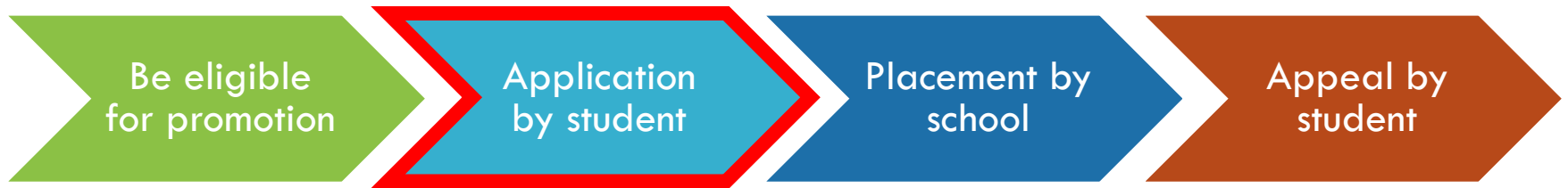
# How can you get the subjects of your choice?



## Promotion Criteria

Promoted to 3N(A)	Laterally transferred to 3Express	Laterally transferred to 3N(T) or Retain at 2N(A)
Grade 5 or better in <ul style="list-style-type: none"><li>● EL and 2 other subj <u>or</u></li><li>● 4 subjects</li></ul>	75% or higher in the average for all subjects (To qualify for consideration)	Has not met minimum attainment level

# How can you get the subjects of your choice?



- After the End-of-Year Examinations
- A session will be conducted on how to submit your choices

# How can you get the subjects of your choice?



- Students must satisfy the **minimum criteria** for certain subjects
- **Professional assessment** by your teachers of your attitude, strengths and weakness, results and historical trends
- Subjects which are over-subscribed will be **awarded to students based on results**
- Subjects will only be offered if a **reasonable number of students** opted for them and there is **available resources**

# How can you get the subjects of your choice?



- Students and parents will be given 3 days to submit an appeal to the school.
- **The school's decision after the appeal is final.**
- **No further changes to subject combination after the appeal phase.**

# What can you do to be better prepared?

## 1. Aspiration and interest

Have a discussion with your child. Find out what he/she **REALLY** want to do after Secondary School?

Ask your child to share their experience in class! Which subjects do they like more? Which **subjects** should want to take? (*not what their best friends like!*)

## 2. Academic Performance

Look through their academic results. What are their **strengths** and **weaknesses** based on their academic performance?

Work with your child to set realistic targets. Ensure they take action **NOW!** Guide them to put in consistent effort and work towards them.

Work with our teachers.



# What can you do to be better prepared?

## 3. Be more informed

Research on post-secondary courses together with your child. Find out what they are interested in and related careers

- Conduct online research, e.g. Junior College websites, polytechnic websites, ITE websites
- Talk to our teachers, ECG counsellor, family/relatives

Start now!

The year '2022' is rendered in a playful, bubbly font. The first '2' is blue, the '0' is yellow, the first '2' is pink, and the second '2' is yellow. The numbers are surrounded by small, colorful confetti pieces in shades of blue, yellow, and pink.