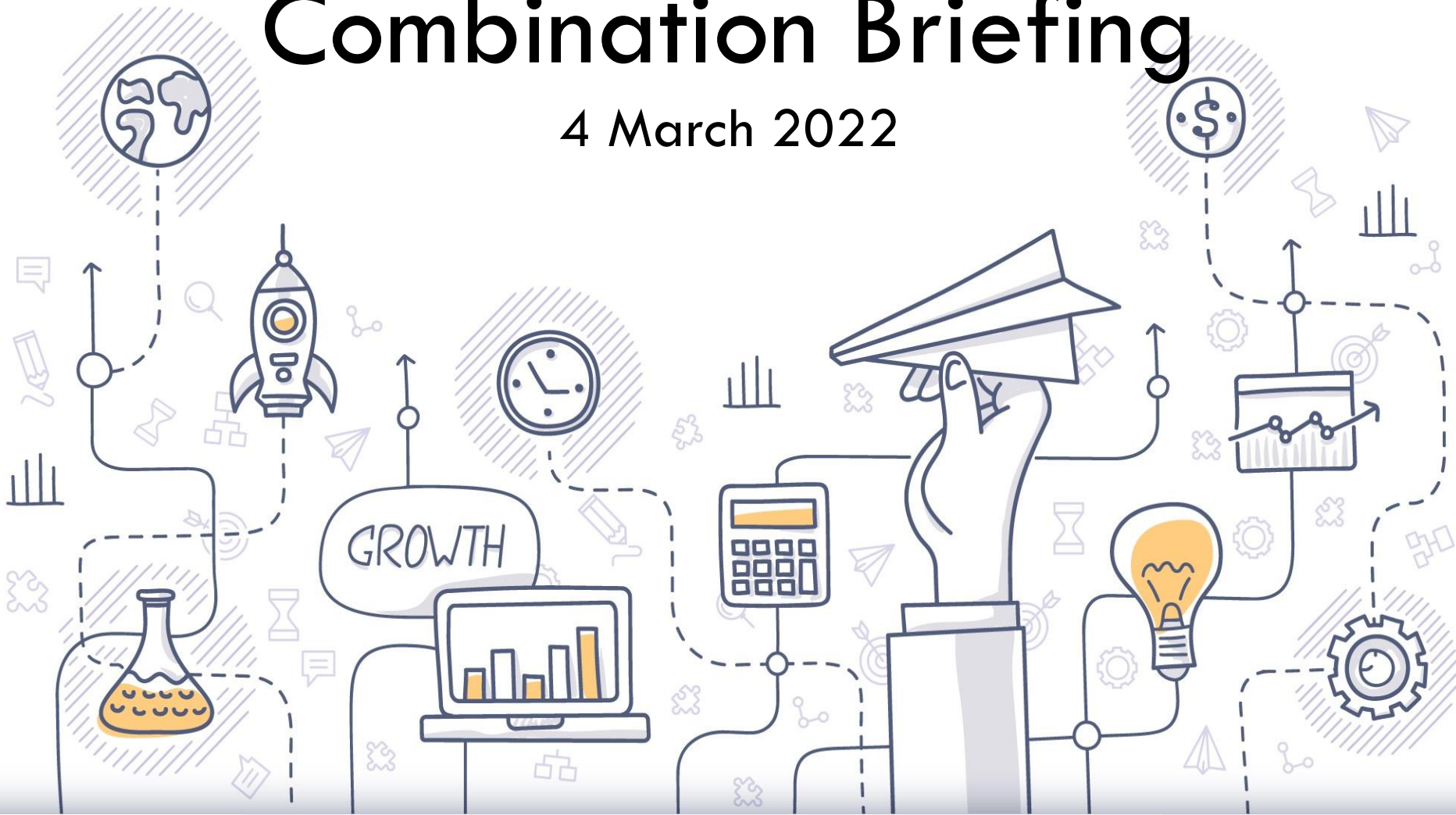


# Sec 2 Express Subject Combination Briefing

4 March 2022



# Some important questions...

- **Why is it important** to choose the right subjects?
- **What should you consider** when exercising your choice?
- **What choices** does the school offer?
- **How can you get** the subjects of your choice?
- **What can you do** to be better prepared?



# Why is it important to choose the right subjects?

End of Sec 4

Pursuing your desired  
tertiary education and  
course of study

End of tertiary education  
Pursuing your interest/  
passion/ aspiration / career

End of Sec 2

The subjects you can select

Middle of Sec 2

Your academic  
performance now!



# What should you consider when exercising your choice?

## Pursuing your interest/passion/aspiration

I am interested in  
our history

I aspire to be an artist

I can make a  
difference to  
climate change

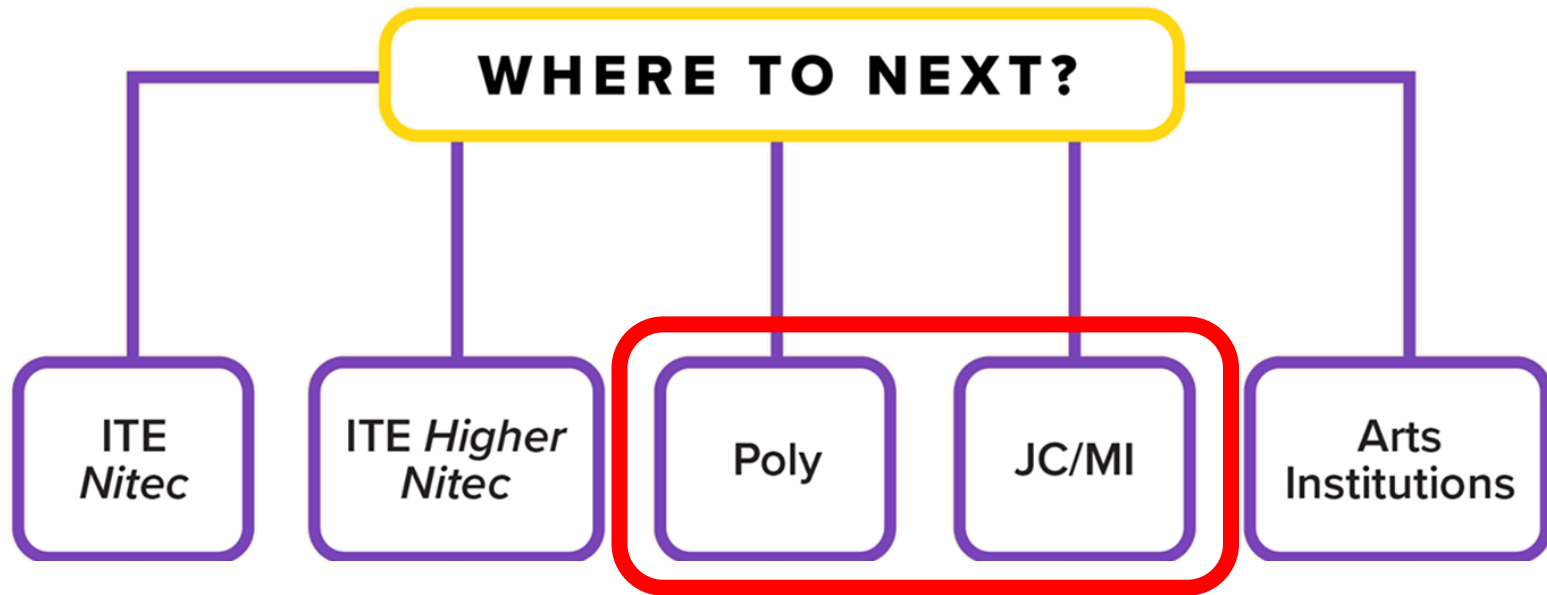
I dreamt I invented  
the fastest car

Where do you want to be?

Consider your interest/passion/aspiration/career

# What should you consider when exercising your choice?

## Pursuing your desired tertiary education



**Let us focus on these two**

# What should you consider when exercising your choice?

## Pursuing your desired tertiary education

JAE Course Types	Aggregate Requirements		
Junior Colleges (2 Years)	English / Higher MT (L1)	5 <u>Relevant</u> Subjects (R5)	6 - 20
Millennia Institute (3 Years)	English / Higher MT (L1)	4 <u>Relevant</u> Subjects (R4)	5 - 20
Polytechnic	English (EL)	2 <u>Relevant</u> Subjects & 2 <u>Best</u> Subjects (R2B2)	26 or better

**Where are you right now?**

**Consider your ability, strengths and weaknesses**

# What should you consider when exercising your choice?

## Pursuing your desired tertiary education

### Examples of JC cut-off points

S/No	JC Name	Arts		Science/IB	
		Course Code	Previous (2021) JAE Net L1R5	Course Code	Previous (2021) JAE Net L1R5
1	Anderson Serangoon Junior College	39A	11	39S	11
2	Anglo-Chinese Junior College	22A	9	22S	8
3	Anglo-Chinese School (Independent)	-	-	51I	5
4	Catholic Junior College	23A	13	23S	13
5	Dunman High School	44A	9	44S	8
6	Eunoia Junior College	38A	8	38S	7
7	Hwa Chong Institution	24A	5	24S	4
8	Jurong Pioneer Junior College	40A	16	40S	15
9	Nanyang Junior College	26A	6	26S	6
10	National Junior College	27A	8	27S	7
11	Raffles Institution	28A	5	28S	4
12	River Valley High School	45A	9	45S	8
13	St. Andrew's Junior College	30A	11	30S	10
14	St. Joseph's Institution	-	-	52I	8
15	Tampines Meridian Junior College	41A	13	41S	13
16	Temasek Junior College	32A	9	32S	9
17	Victoria Junior College	33A	8	33S	7
18	Yishun Innova Junior College	42A	19	42S	20

### Examples of Poly cut-off points

Courses	Course Code	Aggregate Type	Net ELR2B2 Range for Previous (2021) JAE
<b>BUSINESS &amp; MANAGEMENT</b>			
Accountancy	N51	ELR2B2-B	4 to 11
Arts Business Management	N91	ELR2B2-B	5 to 9
Banking & Finance	N53	ELR2B2-B	4 to 11

Sample of courses in Ngee Ann Poly

Where are you right now?

Consider your ability, strengths and weaknesses

# What should you consider when exercising your choice?

## Pursuing your desired tertiary education

		Course Type			
		A	B	C	D
EL		<ul style="list-style-type: none"> <li>English</li> </ul>			
R1		<ul style="list-style-type: none"> <li>Art</li> <li>Combined Humanities</li> </ul>	<ul style="list-style-type: none"> <li>Elementary Mathematics</li> <li>Additional Mathematics</li> </ul>		
R2	E/A Mathematics	✓			
	Combined Humanities	✓	✓		
	Pure Science			✓	✓
	Combined Science			✓	✓
	D&T / NFS	✓		✓	✓
	Art	✓	✓		✓
	Principles of Accounts	✓	✓		
	Mother Tongue	✓			

\* Based on subjects offered by BMSS

**How can you get there?**

**Consider your future course requirements**



# What choices does the school offer?

Express students generally take 7 subjects.

No	Subjects		
1	English Language		
2	Mother Tongue		
3	Mathematics		
4	Choice of combined humanities <ul style="list-style-type: none"><li>• Social Studies &amp; History</li><li>• Social Studies &amp; Geography</li><li>• Social Studies &amp; Literature in English*</li></ul>		
	Option A	Option B	Option C
5	<b>Choice of 2 pure sciences</b> <ul style="list-style-type: none"><li>• Physics*</li><li>• Chemistry*</li><li>• Biology*</li></ul>	<b>Choice of</b> <ul style="list-style-type: none"><li>• Physics* and Sci(Chemistry/Biology)</li><li>• Chemistry* and Sci(Physics/Biology)</li><li>• Biology* and Sci(Physics/Chemistry)</li></ul>	<b>Choice of</b> <ul style="list-style-type: none"><li>• Sci(Physics/Chemistry)</li><li>• Sci(Chemistry/Biology)</li></ul>
6			<b>Choice of</b> <ul style="list-style-type: none"><li>• Design and Technology</li><li>• Nutrition and Food Science</li><li>• Principles of Accounts</li></ul>
7	<b>Choice of</b> <ul style="list-style-type: none"><li>• Additional Mathematics*</li><li>• Principles of Accounts</li></ul>		

\* Subject with criteria

\* Subject with criteria

# What choices does the school offer?

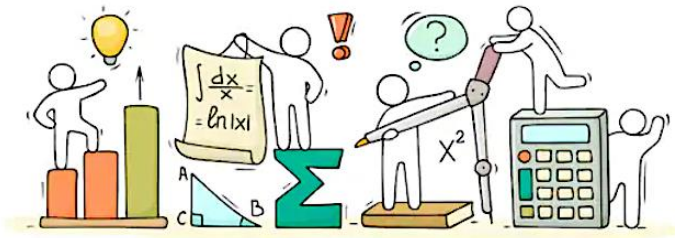


Some of these subjects/combinations are more demanding. Hence, criteria are set to ensure students are able to manage in Sec 3 & 4.

Subject	Criteria (based on Sec 2 overall results)
Two pure sciences e.g. Physics AND Chemistry	Maths $\geq 70\%$ AND Science $\geq 70\%$ Additional requirement for Biology: English $\geq 65\%$
One pure sciences e.g. Physics, Chemistry, Biology	Maths $\geq 65\%$ AND Science $\geq 65\%$ Additional requirement for Biology: English $\geq 65\%$
Additional Mathematics	Maths $\geq 65\%$ AND $\geq 65\%$ in Algebra component
Humanities (English Literature)	English AND English Literature $\geq 60\%$ AND teachers' recommendation

# What choices does the school offer?

## Subject comparison (Amath vs POA)



### Additional Mathematics

- Three strands:
  - Algebra
  - Geometry and Trigonometry
  - Calculus
- Requires: Conceptual understanding, skill proficiency, reasoning, communication and connections, thinking skills and heuristics, and applications and modelling

### Principles of Accounts

- Introduction to financial accounting
- Prepare, communicate and use financial information
- Appreciate the need for ethical conduct.
- Develop lifelong skills and values useful in the increasingly complex world of business.
- Develop decision-making skill in evaluating choices using both accounting and non-accounting information

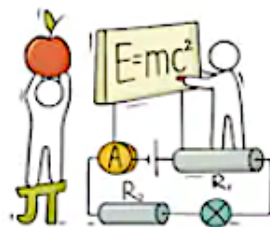
# What choices does the school offer?

## Subject comparison (Amath vs POA)

	Additional Mathematics	Principles of Accounts
<b>Exam Format</b>	<p><b>Paper 1 (50%, 90m, 2h 15min)</b></p> <ul style="list-style-type: none"> <li>• 11 – 13 Qn</li> </ul> <p><b>Paper 2 (50%, 90m, 2h 15min)</b></p> <ul style="list-style-type: none"> <li>• 9 – 11 Qn</li> </ul>	<p><b>Paper 1 (40%, 40m, 1h):</b></p> <p><b>Structured</b> (3 – 4 Qn)</p> <p><b>Paper 2 (60%, 60m, 2h):</b></p> <p>Answer 4 compulsory structured questions.</p> <ul style="list-style-type: none"> <li>• One question requires the preparation of financial statements for a business for one financial year. (20 marks)</li> <li>• A scenario-based question (7 marks) will be part of one of the 3 remaining questions.</li> </ul>
<b>JC</b>	<ul style="list-style-type: none"> <li>• Requirement for H2 Math</li> </ul>	<ul style="list-style-type: none"> <li>• Not a pre-requisite for JC subjects</li> </ul>
<b>Poly (R1/R2)</b>	<ul style="list-style-type: none"> <li>• Humanities or Media</li> <li>• Business</li> <li>• Engineering, Science, Facility Management or IT</li> <li>• Architecture or design</li> </ul>	<ul style="list-style-type: none"> <li>• Humanities or Media</li> <li>• Business</li> </ul>

# What choices does the school offer?

## Subject comparison (Sciences)



### Chemistry

- Experimental chemistry
- Atomic structure & stoichiometry
- Chemistry of reactions
- Periodicity
- Atmosphere
- Organic chemistry

### Physics

- Measurement
- Newtonian mechanics
- Thermal physics
- Waves
- Electricity & magnetism

### Biology

- Principles of biology
- Maintenance & regulation of life processes
- Continuity of life
- Man and his environment

# What choices does the school offer?

## Subject comparison (Pure vs combined science)

	Pure Science	Combined Science
<b>Exam Format</b>	<p><b>Paper 1 (30%, 40m, 1 h)</b>  <b>Multiple Choice (40 Qn)</b></p> <p><b>Paper 2 (50%, 80m, 1 h 45min)</b>  <b>Structured</b></p> <ul style="list-style-type: none"> <li>• <b>Section A (50m)</b></li> <li>• <b>Section B (30m)</b> include a <b>data-based question</b> and a 10-m either/or question</li> </ul> <p><b>Paper 3 (20%, 40m, 1 h 50min)</b>  <b>Practical</b> (variable number of qn)  Includes <b>assessment of planning</b></p>	<p><b>Paper 1 (20%, 40m, 1 h)</b>  <b>Multiple Choice (40 Qn)</b></p> <p><b>Paper 2/3/4 (32.5%, 65m, 1 h 15min)</b>  (one for each science)  <b>Structured</b></p> <ul style="list-style-type: none"> <li>• <b>Section A (45 m)</b></li> <li>• <b>Section B (20 m)</b> (3 choose 2)</li> </ul> <p><b>Paper 5 (15%, 30m, 1 h 30 min)</b>  <b>Practical</b> (1 – 2 qn for each Science)  Includes suggestion for modification / extension</p>
<b>JC</b>	Requirement for H2 Science	Requirement for H2 Science in place of Pure Science for some JCs
<b>Poly (R1/R2)</b>	<ul style="list-style-type: none"> <li>• Engineering, Science, Facility Management or IT</li> <li>• Architecture or design</li> </ul>	

\*H2 Chemistry is a requirement for Medicine, Dentistry and Pharmacy in local universities

# What choices does the school offer?

## Subject comparison (Coursework)

Design & Technology	Nutrition & Food Science
<ul style="list-style-type: none"><li>• Design and prototype ideas</li><li>• Understand everyday activities and create possibilities to make life better.</li><li>• Cultivate creative, critical and reflective thinking</li><li>• Develop related dispositions and skills using graphical means and technology</li></ul>	<ul style="list-style-type: none"><li>• Lead a healthier lifestyle proactively through proper diet and nutrition.</li><li>• Advocate sustainable food consumption by planning and making appropriate food choices.</li><li>• Apply principles of culinary science creatively in food preparation and cooking.</li></ul>

# What choices does the school offer?

## Subject comparison (Coursework)

	Design & Technology	Nutrition & Food Science
<b>Exam Format</b>	<p><b>Paper 1 (40%, 80m, 2h) Written Paper</b></p> <p><b>Paper 2 (60%, 22 weeks) Coursework</b></p> <ul style="list-style-type: none"> <li>Involves <b>design journal, mock-up(s), presentation boards</b> and <b>prototype</b></li> </ul>	<p><b>Paper 1 (40%, 100m, 2h) Written Paper</b></p> <p><b>Paper 2 (60%, max. 28hrs) Coursework</b></p> <ul style="list-style-type: none"> <li>Involves task analysis, research &amp; development, decision making, planning, execution and evaluation</li> <li>To present in <b>coursework folio</b>, max. 25 pages</li> </ul>
<b>JC</b>	<ul style="list-style-type: none"> <li>Not a pre-requisite for JC subjects</li> </ul>	<ul style="list-style-type: none"> <li>Not a pre-requisite for JC subjects</li> </ul>
<b>Poly (R1/R2)</b>	<ul style="list-style-type: none"> <li>Humanities or Media</li> <li>Engineering, Science, Facility Management or IT</li> <li>Architecture or design</li> </ul>	<ul style="list-style-type: none"> <li>Humanities or Media</li> <li>Engineering, Science, Facility Management or IT</li> <li>Architecture or design</li> </ul>



# What choices does the school offer?

## Subject comparison (Humanities)



### History

- Impact of World War I
- Rise of authoritarian regimes and its impact in the interwar years
- World War II in Europe and the Asia-Pacific
- Cold War and the bi-polar world order
- Manifestation of the Cold War outside Europe
- Reasons for the end of the Cold War

### Geography

- Geography in Everyday life
- Tourism
- Climate or Tectonics
- Topographical Map Reading Skills
- Geographical Data and Techniques

### Literature in English

- Study of a novel (Prose) in the areas of Plot, Character, Theme, Mood and Atmosphere and Style.
- Study of Poetry in the areas of writer's craft, style and effect.
- Study of the construction of sensitive and informed personal responses.

# What choices does the school offer?

## Subject comparison (Humanities)

	SS + History	SS + Geography	SS + EL Lit
<b>Exam Format</b>	<b>Paper 1 (50%, 1 h 45min) - Social Studies</b> Section A (35m): Source-based case study Section B (15m): 1 structured-response question		
	<b>Paper 2 (50%, 1 h 40min)</b> <ul style="list-style-type: none"> <li><b>Section A (30%)</b> <b>Source-based</b></li> <li><b>Section B (20%)</b> <b>Structured Essay</b> Answer 1 out of 2 questions.</li> </ul>	<b>Paper 2 (50%, 1 h 40min)</b> <ul style="list-style-type: none"> <li><b>Section A (13%)</b></li> <li><b>Section B (12%)</b></li> <li><b>Section C (25%)</b></li> </ul> For each section, answer 1 out of 2 structured questions.	<b>Paper 2 (50%, 1 h 40min)</b> <ul style="list-style-type: none"> <li><b>Section A (25%)</b> <b>Prose</b> - Answer one question based on one of the six set texts.</li> <li><b>Section B (25%)</b> <b>Unseen poetry</b> - Answer one of the two unseen poems.</li> </ul>
<b>JC</b>	<ul style="list-style-type: none"> <li>Not a pre-requisite for JC subjects</li> </ul>	<ul style="list-style-type: none"> <li>Not a pre-requisite for JC subjects</li> </ul>	<ul style="list-style-type: none"> <li>Can be used as pre-requisite to qualify for H2 Literature in English in some JCs</li> </ul>
<b>Poly (R1/R2)</b>	<ul style="list-style-type: none"> <li>Humanities or Media</li> <li>Business</li> </ul>		

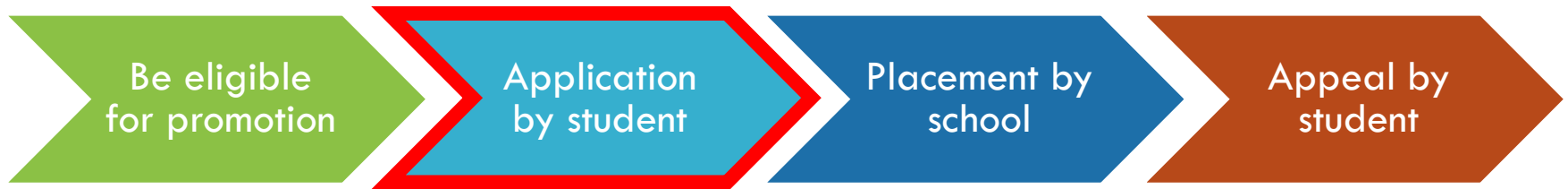
# How can you get the subjects of your choice?



## Promotion Criteria

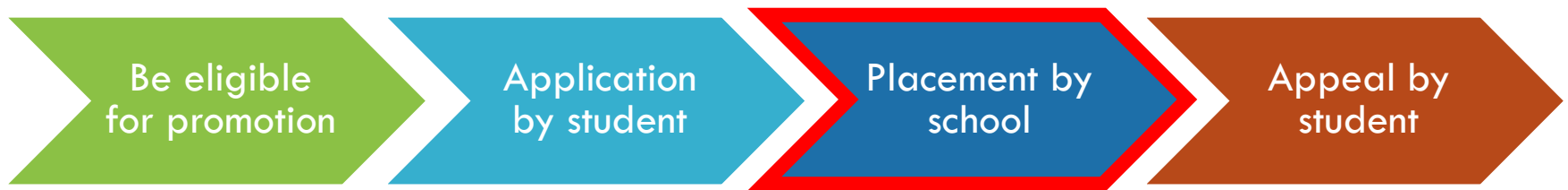
Promoted to 3E	Laterally transferred to 3N(A)
<ul style="list-style-type: none"><li>• Pass EL <u>AND</u></li><li>• Overall pass in average of other subjects</li></ul>	<ul style="list-style-type: none"><li>• Does not meet promotion criteria</li><li>• <b>No retention in 2E</b></li></ul>

# How can you get the subjects of your choice?



- After the End-of-Year Examinations
- A session will be conducted on how to submit your choices

# How can you get the subjects of your choice?



- Students must satisfy the **minimum criteria** for certain subjects
- **Professional assessment** by your teachers of your attitude, strengths and weakness, results and historical trends
- Subjects which are over-subscribed will be **awarded to students based on results**
- Subjects will only be offered if a **reasonable number of students** opted for them and there is **available resources**

# How can you get the subjects of your choice?



- Students and parents will be given 3 days to submit an appeal to the school.
- **The school's decision after the appeal is final.**
- **No further changes to subject combination after the appeal phase.**

# What can you do to be better prepared?

## 1. Aspiration and interest

Have a discussion with your child. Find out what he/she **REALLY** want to do after Secondary School?

Ask your child to share their experience in class! Which subjects do they like more? Which **subjects** should want to take? (*not what their best friends like!*)

## 2. Academic Performance

Look through their academic results. What are their **strengths** and **weaknesses** based on their academic performance?

Work with your child to set realistic targets. Ensure they take action **NOW!** Guide them to put in consistent effort and work towards them.

Work with our teachers.



# What can you do to be better prepared?

## 3. Be more informed

Research on post-secondary courses together with your child. Find out what they are interested in and related careers

- Conduct online research, e.g. Junior College websites, polytechnic websites, ITE websites
- Talk to our teachers, ECG counsellor, family/relatives

Start now!

